

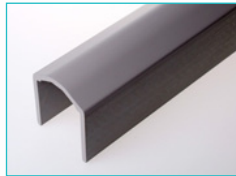


CREATE MORE WITH LESS®



# Fiberline hand rail System

Durable and non-conductive



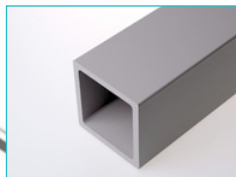
### Hand rail

Item no. 121605 Grey\*  
Item no. 121606 White  
EN13706 grade E23



### Columns end caps

mm 50x50x5 60x60x5  
Item no. 460020 460045



### Column

mm 50x50x5 60x60x5  
Item no. 060275 060274 Grey\*  
Item no. 060189 060237 White  
EN13706 grade E23



### Knee rail end caps

Item no. 460072



### Knee rail

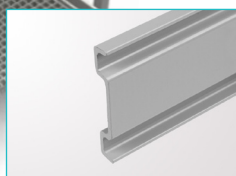
mm 40x3 48x3  
Item no. 020231 - Grey\*  
Item no. 020237 010050 White



### Columns brackets

mm 50x50 60x60 60x80  
Item no. 147003 147032 147035\*

\* With cut in 80 side



### Foot plate

Item no. 120486 Grey\*  
Item no. 120567 White



### Columns brackets

mm 50x50 60x60 60x80  
Item no. 147006 147030 147034



### Hand rail connection

For connecting handrails in all angles and in both horizontal and vertical direction.  
Item no. 148875



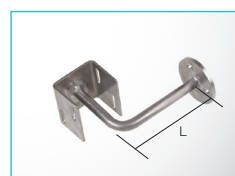
### Columns brackets

mm 50x50 60x60  
Item no. 147005 -



### Knee rail connection

For connecting kneerails in all angles and in both horizontal and vertical direction.  
Item no. 148869



### Hand rail brackets

mm L=74 L=100  
Item no. 147016 147022

\*Fire-retardant

# Fiberline hand rail profiles

## Compliance to standards

### Safety requirements applicable to guard-rails according to ISO-14122 and EN-50308

Dimensions: Column: 1100 mm above the walking level on the landing.

Distance between columns preferably limited to 1500 mm.

The guard-rail shall include at least one intermediate knee rail.

Space between knee rail and hand rail as well as between knee rail and foot plate shall not exceed 500 mm.

Load/Deflections: The guard-rail is to withstand a minimum line load of 300 N/m.

The maximum deflection is: 30 mm

### Load Table

Column 50x50 mm - H 1100 mm

Distance between columns, L [m]	0,50	0,60	0,70	0,80	0,90	1,00	1,10	1,20	1,30	1,40	1,50	1,60	1,70	1,80	1,90	2,00
<b>Ultimate Limit State (ULS)</b>																
Bearing capacity, q [N/m]	3275	2729	2339	2046	1819	1637	1488	1364	1259	1169	1091	1023	963	909	861	818
<b>Serviceability Limit State (SLS)</b>																
Load at 10 mm deflection [N/m]	334	277	237	206	182	163	146	133	121	111	101	93	86	79	73	68
Load at 30 mm deflection [N/m]	1002	833	711	619	547	489	440	399	364	333	305	281	259	239	221	204
Load at 50 mm deflection [N/m]	1670	1388	1186	1032	912	815	734	665	606	555	509	468	432	399	368	340
Load at 100 mm deflection [N/m]	ULS*	ULS*	ULS*	ULS*	ULS*	1630	1468	1331	1213	1110	1019	937	864	798	737	681

\*Failure occurs before the specified deflection

### Relation between deflection and column distance

