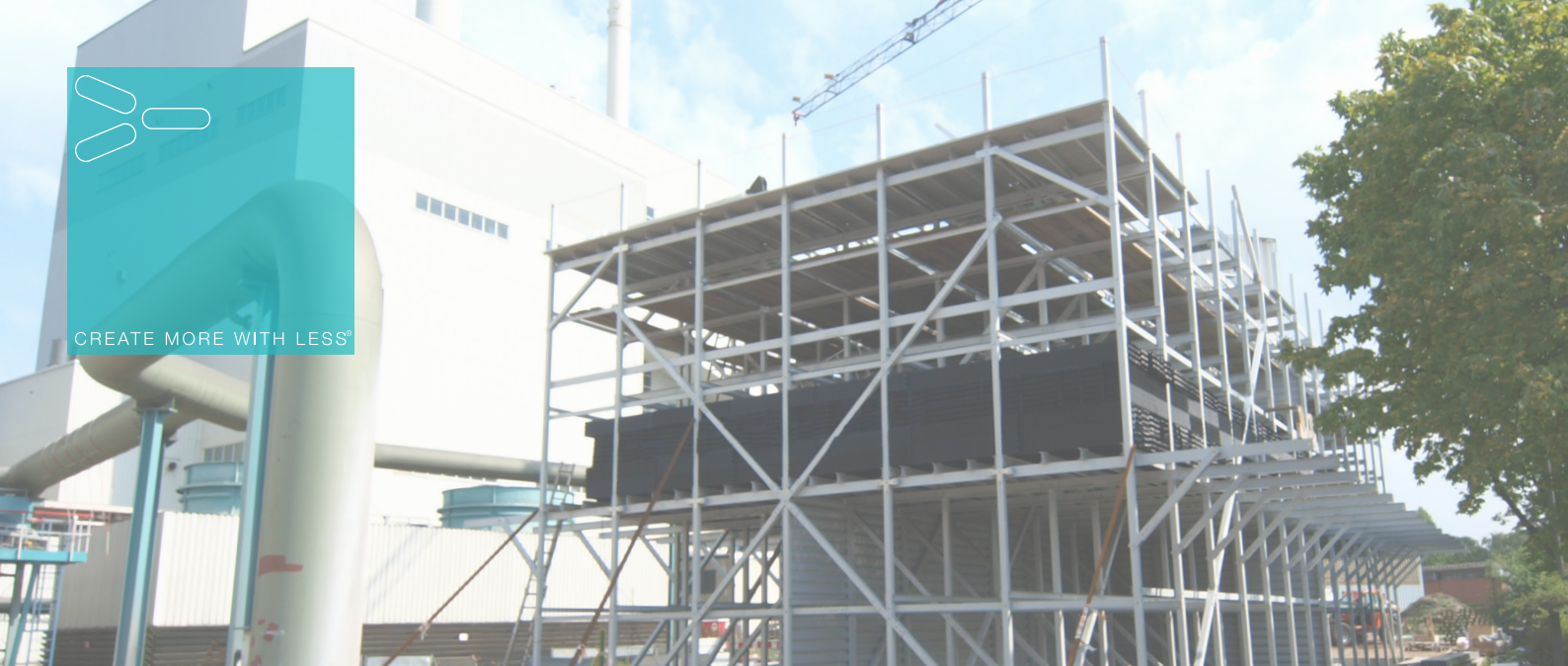
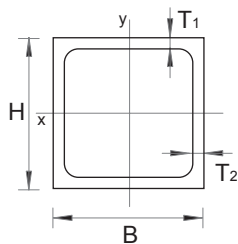
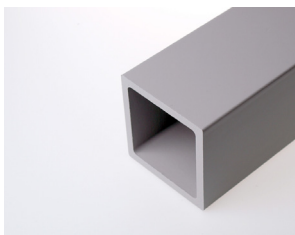


CREATE MORE WITH LESS®

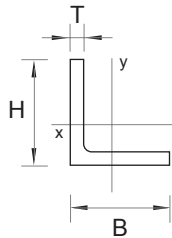
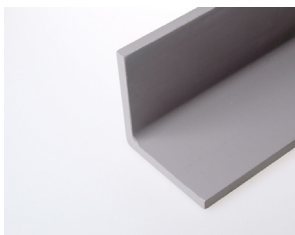


Square tubes



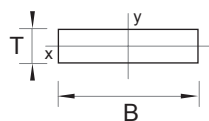
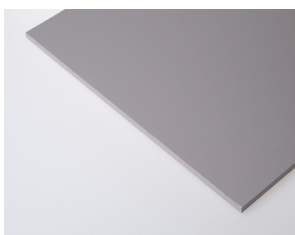
H	B	T ₁	T ₂	g	A	I _{xx}	E _{0°}	Stock item	abZ
mm	mm	mm	mm	g/m	x 10 ³ mm ²	x 10 ⁶ mm ⁴	x 10 ³ Mpa		
50	50	5		1.630	0,90	0,31	23	•	•
60	60	5		2.000	1,11	0,57	23	•	•
75	75	6		2.999	1,67	1,33	23	•	•
75	75	8		3.870	2,15	1,63	23	•	•
80	60	5		2.360	1,31	1,15	23	•	•
100	60	8		4.180	2,31	2,84	23	•	•
100	100	6		4.090	2,27	3,36	23	•	•
100	100	8		5.320	2,96	4,21	23	•	•
114	114	6		4.684	2,60	5,08	23	•	•
114	114	8		6.124	3,40	6,41	23	•	•
114	114	10		7.506	4,17	7,59	23	•	•
120	60	5		3.060	1,70	3,09	23	•	•
120	120	6		4.940	2,75	5,98	23	•	•
120	120	8		6.480	3,60	7,57	23	•	•
132	132	9,5		8.690	4,73	11,95	23	•	•
140	60	6	5	3.650	2,00	5,08	23	•	•
160	160	8		8.850	4,92	19,10	23	•	•
200	200	10		13.840	7,69	46,50	23	•	•
240	240	12		20.000	11,00	96,40	23	•	•

Angle profiles



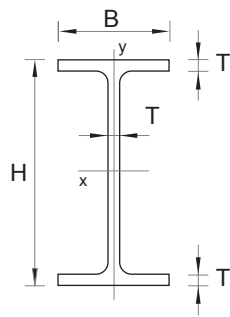
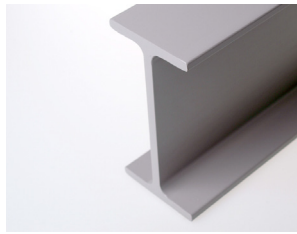
H	B	T	g	A	I _{xx}	E _{0°}	Stock item	abZ
mm	mm	mm	g/m	x 10 ³ mm ²	x 10 ⁶ mm ⁴	x 10 ³ Mpa		
50	50	6	1.026	0,57	0,13	23	•	•
50	50	8	1.350	0,75	0,17	23	•	•
75	75	6	1.555	0,87	0,47	23	•	•
75	75	8	2.045	1,15	0,60	23	•	•
80	80	8	2.189	1,23	0,74	23	•	•
100	100	8	2.765	1,55	1,49	23	•	•
100	100	10	3.420	1,91	1,80	23	•	•
100	100	12	4.061	2,27	2,10	23	•	•
150	100	8	3.500	1,95	4,57	23	•	•
150	100	10	4.320	2,41	5,59	23	•	•
150	100	12	5.141	2,87	6,57	23	•	•
150	150	8	4.205	2,35	5,21	23	•	•
150	150	10	5.220	2,94	6,38	23	•	•
150	150	12	6.221	3,47	7,51	23	•	•

Strips



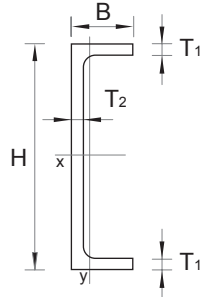
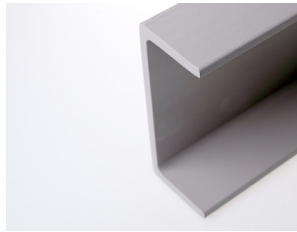
B	T	g	A	I _{xx}	E _{0°}	Stock item	abZ
mm	mm	g/m	x 10 ³ mm ²	x 10 ⁶ mm ⁴	x 10 ³ Mpa		
30	6	320	0,18	0,54	17	•	•
50	6	540	0,30	0,90	17	•	•
50	10	900	0,50	4,20	17	•	•
100	6	1.080	0,60	1,80	17	•	•
100	8	1.444	0,80	4,30	17	•	•
100	10	1.800	1,00	8,30	17	•	•
140	10	1.520	1,40	11,70	17	•	•
200	8	2.880	1,60	8,50	17	•	•
200	10	3.600	2,00	16,70	17	•	•
200	12	4.320	2,40	28,80	17	•	•
200	15	5.400	3,00	56,30	17	•	•
300	8	4.320	2,40	12,80	17	•	•
300	10	5.400	3,00	25,00	17	•	•
500	10	9.000	5,00	41,70	17	•	•

I-profiles



H	B	T	g	A	I_{xx}	$E_{0°}$	Stock item	abZ
mm	mm	mm	g/m	$\times 10^2 \text{ mm}^2$	$\times 10^9 \text{ mm}^4$	$\times 10^3 \text{ Mpa}$		
120	60	5	2.110	1,17	2,60	23		
120	60	6	2.550	1,42	3,10	23	•	•
160	80	8	4.480	2,49	9,66	28	•	•
200	100	10	6.990	3,89	23,60	28	•	•
240	120	12	10.100	5,60	48,90	28	•	•
300	150	15	15.700	8,74	119,00	28	•	•
360	180	18	22.700	12,60	248,00	28		•

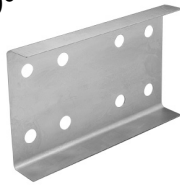
U-profiles



H	B	T ₁	T ₂	g	A	I_{xx}	$E_{0°}$	Stock item	abZ
mm	mm	mm	mm	g/m	$\times 10^2 \text{ mm}^2$	$\times 10^9 \text{ mm}^4$	$\times 10^3 \text{ Mpa}$		
100	30	6	6	1.611	0,90	1,15	23	•	•
100	50	6	6	2.043	1,14	1,68	23		•
114	41	6	6	2.000	1,11	1,98	23		•
120	50	6	6	2.290	1,27	2,65	23	•	•
140	40	5	5	1.910	1,06	2,78	23		•
150	40	6	6	2.394	1,33	3,90	23	•	•
160	48	8	8	3.510	1,95	6,57	28	•	•
200	60	10	10	5.480	3,04	16,00	28	•	•
240	72	8	8	5.350	2,97	23,30	28	•	•
240	72	12	12	7.890	4,38	33,20	28	•	•
300	90	15	15	12.300	6,85	81,20	28	•	•
360	108	18	18	17.800	9,86	168,00	28	•	•

Brackets for I- and U-profiles

0°



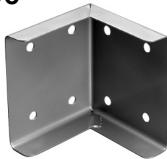
For profile height	H	Amount of holes
mm	mm	-
120	108	8
160	144	8
200	180	8
240	216	8
300	270	8
360		8

45°



For profile height	H	Amount of holes
mm	mm	-
120	108	8
160	144	8
200	180	8
240	216	8
300	270	8
360		8

90°



For profile height	H	Amount of holes
mm	mm	-
120	108	8
160	144	8
200	180	8
240	216	8
300	270	8
360		8

135°



For profile height	H	Amount of holes
mm	mm	-
120	108	6
160	144	6
200	180	6
240	216	6
300	270	6
360		6